



Textured elegance
優美質感

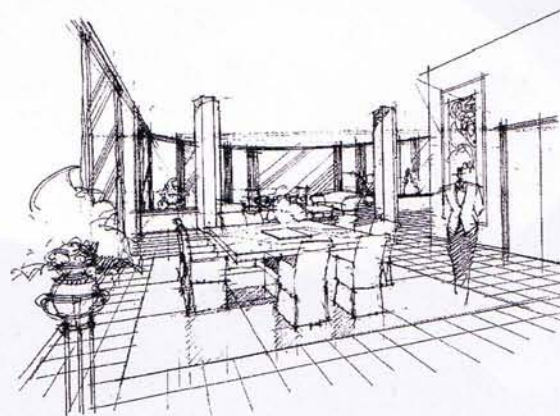
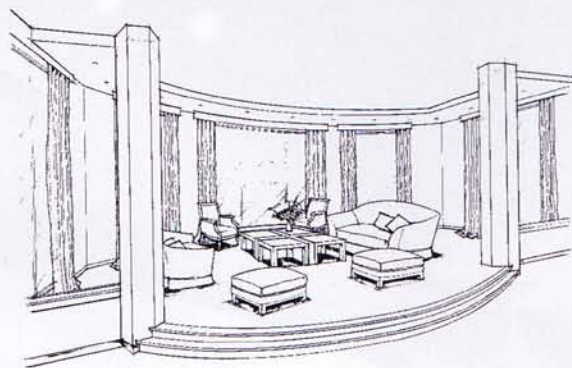
**Kimskia
Guillemard &
Nicole Cromwell**

SKIA Design

Tel: 2877 5093

While Johnny Li's creation aims for the taste buds, Kimskia Guillemard and Nicole Cromwell target the sense of touch. The SKIA Design duo explore an amazing array of texture that tempt visitors to trail their fingers around the room. "It's a celebration of fabric and texture. We wanted a scheme that was touchy and tactile."

In the dining room, the cool bite of sandstone marble is a contrast to the sumptuous chocolate velvet seats, into whose embrace visitors gladly sink. Shimmering sheers in a warm biscuit hue cascade in pools onto the floor, and are delicate to the touch. "We wanted to create a light feeling by incorporating water and floaty diaphanous curtains," the duo explained.



Underfoot, frosted aquamarine glass covers a cool water pool, reminiscent of the sea. Up-lit, it casts sensual shadows, while adding movement and energy to the scheme. The fluidity continues at the water-filled frosted glass windows, backlit to create a soft glow.

In the living area, classical furnishings have been updated with a splash of white paint and rich velvet in a chocolate hue. The rich array of texture rubs shoulders with the clean-cut shapes and finishes, celebrating a scheme that is both stimulating and sensual.

設計師李宇中的設計注重品味，而Kim skia Guillemard和Nicole Cromwell則將注意力集中在質感上。這間設計公司的雙人組合，展示一系列耀目的織物，深深吸引了參觀者的視線。「它是布藝和質感的慶功會。我們

需要的是一個觸感和質感的項目。」

在飯廳裡，清涼的沙石雲石與朱古力色豪華絲絨椅墊形成對比。帶暖意的米色閃光薄紗，觸手輕柔，流麗地自窗子直瀉地上。「我們想結合水和飄逸的窗簾，營造一種輕鬆安逸的感覺，」設計二人組說。

足下，海藍色磨砂玻璃鋪陳在清涼的水池上，令人聯想到涼涼的海水。上射燈投下性感的影子，為整個裝飾計劃增添動感和活力。流麗的裝飾手法繼續出現在注水磨砂玻璃窗上，後射燈帶出一道柔和光線。

在起居室，一抹白漆油和朱古力色絲絨，令古典傢具擺設散發時代感。高背沙發用帶暖意天然色調的布料進行裝飾。豐潤的質地與明淨的形狀和潤飾並存，慶賀此激動人心和感性裝飾計劃的成功。