

Lush plants bring a spark of green to the cool interior.
茂密的植物為素淨的居室注入生氣勃勃的綠色。



INTENTIONALLY IGNORING
CONTEMPORARY THINKING ON
COLOUR, THIS STARKLY BEAUTIFUL
MID-LEVELS FLAT PROVES THAT
TRUE STYLE IS SOMETIMES A
MATTER OF BLACK-AND-WHITE.

故意不採用今天流行的顏色裝飾手法，
此間簡雅漂亮的半山寓所證實真正的風
格有時通過黑與白來營造。



blanc 黒
expression 白
天下



Fresh white and near-black furnishings make for some striking contrasts.
白色和近似黑色的裝飾，形成鮮明對比。

A seamless blend of old and new.
古與今的完美結合。



For those who believe black-and-white is a thing of the past, it may be time for a rethink. This Mid-Levels bachelor pad proves you don't need colour to be contemporary — created by Skia Design, its chic monochromatic interior provides a sharp, minimal sense of drama that owes nothing to hue.

The client, an American lawyer, was very specific in his requirements: no cream, no curtains, no clutter. Designers Nicole Cromwell and Kim Guillemard set about creating a clean-cut look which retained their signature style. "Our client said he wanted the whole apartment white and we just elaborated on that," recalls Cromwell.

The clean white backdrop creates a strongly Californian tone, but traditional Asian artefacts leave you in no doubt as to the flat's locale. In the dining area particularly, traditional Asian dark wood furnishings that wouldn't have looked out of place in the homes of pioneers, have been recreated with a modern slant that is unmistakably of today. Even chunkier, though clean-lined and simple, the dining chairs were custom-made by Guillemard's offshoot company Skia Furnishings. Their effect against the cool milky shell of the walls is strongly reminiscent of a photographic negative.

The sharp, modern lines extend to the crisply white soft furnishings — yet more bespoke Skia products. Pared down to the simplest geometric forms, each striking piece has been



The semi-translucent table gives a touch of fluidity to the scheme. The Italian chrome lamp was designed by William Artists.
半透明桌子增添流麗感。意大利鍍鉻燈飾由William Artists設計。



Traditional Japanese furnishings were recreated with a modern slant by Guillemard's furniture company.
Guillemard的傢具公司以時尚手法重新裝飾傳統日本傢具擺設。



The old dining table has been updated with acid-etched glass.

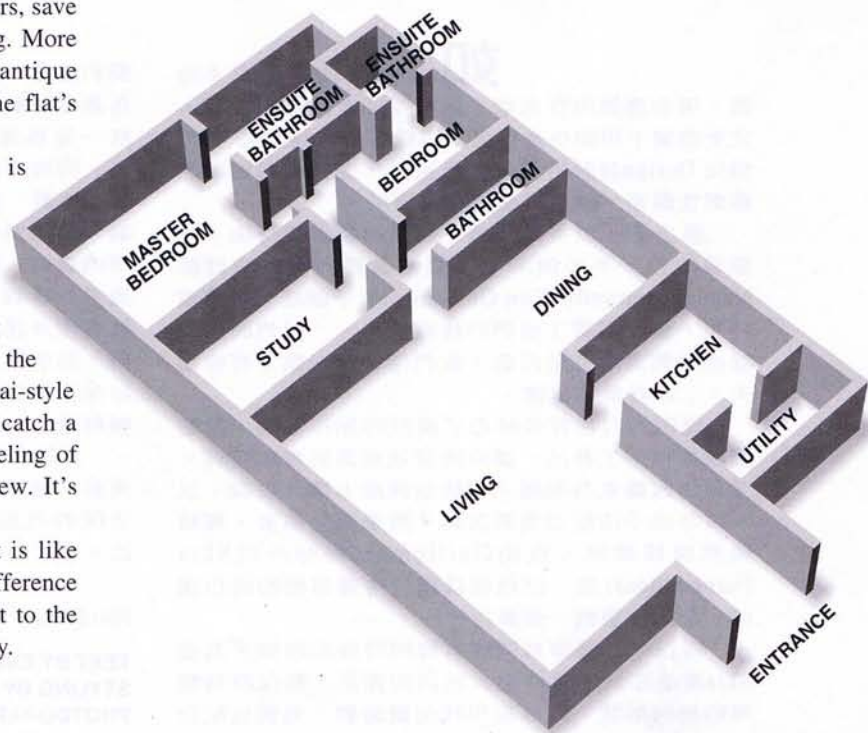
古老的餐桌配以蝕刻玻璃，散發時代氣息。

finished with ultra modern chrome feet. The carpets match the minimal theme, being off-white with smart black borders, save for the fun-and-funky influence of the Zebra-print rug. More old Asian artefacts — including a birdcage and an antique window screen — both add warmth and underline the flat's stylish marriage of modernity and traditionality.

The most unusual feature of this apartment is undoubtedly the whitewashed flooring. Treated with a lacquer-type finish, it possesses an almost silk-like surface. Apart from a handsome dark wooden screen in the dining area, the rooms are almost stark in their purity, with no artwork to detract from the breathtaking city views. The absence of window treatments adds to the simple, airy feel, though the addition of triangular Thai-style window bolsters make for a perfect vantage point to catch a glimpse of the stunning cityscape. "There is a real feeling of space in this apartment, especially with the great view. It's very uplifting," says Cromwell.

Indeed, stepping into this 2,500 sq-ft apartment is like retreating to a cool and breezy cocoon — like the difference between black and white itself, it is a serene contrast to the noisy, hurried city that somehow seems light-years away.

Skia Design; tel 2877 5093.





The Chinese screen is from Artemis.
中國屏風購自Artemis。

如果你認為黑與白已不時興，現在應該再作考慮。此間半山單身人士寓所，完全證實不用顏色進行裝飾同樣達致時尚效果，由 Skia Design 設計的時尚單色家居，提供鮮明簡約的戲劇性觀感，顏色絲毫沒有起作用。

屋主是一位美國律師，提出的要求很特別：不要忌廉色，不要窗簾，不要雜亂感。兩位設計師 Nicole Cromwell 和 Kim Guillemard 著手創建一個簡潔外觀，但又保留了他們的特有風格。「我們的客戶提出整間寓所都是白色，我們僅在這一點上花些功夫，」設計師憶述道。

簡明的白色背景締造了濃烈的加州格調，但是傳統亞洲手工藝品，讓你清楚地意識到身在亞洲。尤其是飯廳更為明顯，傳統亞洲深木傢具擺設，以一種時尚手法加以重新裝飾，效果更見顯著。餐椅雖然線條簡單，也由 Guillemard 的分公司 Skia Furnishings 訂造。白色傢具擺設映襯清涼的奶白牆壁，令人聯想到一張像片底片。

雪白的布藝傢具同樣有鮮明時尚的線條，其他 Skia 產品亦然。每件引人注目的傢具，都保持最簡單的幾何形狀，飾以超現代化鍍鉻腳。地氈也配合

簡約主題，選用有黑邊的全白款式，一張趣緻的斑馬圖案地氈屬例外。一些古老的亞洲工藝品——包括一隻鳥籠和一扇古董窗屏——不單增添溫馨氣氛，同時突出寓所揉合現代和傳統風格的特點。

然而，寓所最矚目的特色無疑是刷白地板。經過一種漆類的潤飾，地板擁有一種近乎絲般細膩光滑的表面。除了飯廳的一扇黑木屏風外，其他房間幾乎簡單到了極點，沒有展示藝術品，以免妨礙你欣賞窗外迷人的城市景觀。窗上沒有窗簾或任何裝飾，為居室增添通爽和開揚氣氛。「這間寓所的確給你真實的空間感，尤其是那迷人的景觀，令人心曠神怡，」設計師說。

真的，踏入這間兩千五百平方呎的寓所，宛若來到一個清新活潑的意境——就像黑色與白色本身之間的差別，和那喧囂繁忙的城市形成鮮明的對比。

Skia Design，電話：2877 5093。

TEXT BY EMMA MCKELVIE
STYLING BY STEPHANIE HIMANGO & EMMA MCKELVIE
PHOTOGRAPHY BY EDGAR TAPAN